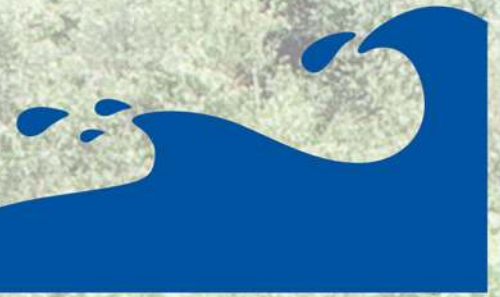


MariSource



Hatchery Equipment & Supplies



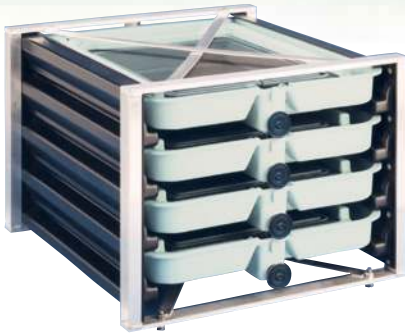
*Producers of
High Quality
Vertical Incubation
Systems.*

*Known for efficient
use of water supply and
floor space.*

MADE IN
USA

VERTICAL INCUBATION SYSTEM

Vertical Incubators conserve floor space and water supply, resulting in the most efficient system available for incubating eggs.



4-Tray vertical incubator

Features

- Removable egg tray
- Controlled water flow
- Built-in cleanout rod
- Non-toxic materials
- 3-6 gpm water usage
- Egg isolation capability
- Fully interchangeable components

Part # Species Screen Total Egg Capacity Overall Dims:HxWxD

CPM5604	12x12	40K	17 ¹ / ₄ " (43.8cm) 23 ³ / ₄ " (60.3cm) 25" (63.5cm)
CPM5605	14x18	48K	17 ¹ / ₄ " (43.8cm) 23 ³ / ₄ " (60.3cm) 25" (63.5cm)
CPM560420	20x20	48K	17 ¹ / ₄ " (43.8cm) 23 ³ / ₄ " (60.3cm) 25" (63.5cm)
Clear Trays			
CPM5604CL	12x12	40K	17 ¹ / ₄ " (43.8cm) 23 ³ / ₄ " (60.3cm) 25" (63.5cm)
CPM5605CL	14x18	48K	17 ¹ / ₄ " (43.8cm) 23 ³ / ₄ " (60.3cm) 25" (63.5cm)
CPM560420CL	20x20	48K	17 ¹ / ₄ " (43.8cm) 23 ³ / ₄ " (60.3cm) 25" (63.5cm)



8-Tray vertical incubator

12-Tray vertical incubator

16-Tray vertical incubator

Part # Species Screen Total Egg Capacity Overall Dims HxWxD

CPM5608	12x12	80K	32 ¹ / ₂ " (82.5cm) 23 ³ / ₄ " (60.3cm) 25" (63.5cm)
CPM5609	14x18	96K	32 ¹ / ₂ " (82.5cm) 23 ³ / ₄ " (60.3cm) 25" (63.5cm)
CPM560820	20x20	96K	32 ¹ / ₂ " (82.5cm) 23 ³ / ₄ " (60.3cm) 25" (63.5cm)

Part # Species Screen Total Egg Capacity Overall Dims HxWxD

CPM5612	12x12	120K	54 ³ / ₄ " (139.1cm) 23 ³ / ₄ " (60.3cm) 25" (63.5cm)
CPM5613	14x18	144K	54 ³ / ₄ " (139.1cm) 23 ³ / ₄ " (60.3cm) 25" (63.5cm)
CPM561220	20x20	144K	54 ³ / ₄ " (139.1cm) 23 ³ / ₄ " (60.3cm) 25" (63.5cm)

Part # Species Screen Total Egg Capacity Overall Dims HxWxD

CPM5616	12x12	160K	69" (173.5cm) 23 ³ / ₄ " (60.3cm) 25" (63.5cm)
CPM5617	14x18	192K	69" (173.5cm) 23 ³ / ₄ " (60.3cm) 25" (63.5cm)
CPM561620	20x20	192K	69" (173.5cm) 23 ³ / ₄ " (60.3cm) 25" (63.5cm)

* Qty depends on Egg size and density

ISOLATION INCUBATION ACCESSORIES

Isolation Components provide seclusion of a single 4, 8, 12 or 16-tray incubator. All components easily retrofit to all available vertical incubation units.

- Keep contaminated water and/or vapor away from other units
- Black panels provide a darkened environment for sensitive eggs
- Drip pans help keep floors dry by redirecting waste water into drains

Note: Isolation panels will not fit on units with front or rear discharge kits (page 5).



4-Tray isolation panel

Black #CPM5634

Note: Black panels are recommended for low light requirements



Isolation top panel

Black #CPM5635

Note: Recommended for low light requirements on top tray of vertical incubator



8-Tray isolation panel

Black #CPM5627 Clear #CPM5626

Note: Clear panels are recommended for frequent water flow monitoring (panels will fit front or rear of unit)



Drip pan (fits all)

Black #CPM5630

Supplied with isolation floor spacers



Isolation panel

Clear #CPM5626

shown on 8-tray unit

Isolation Floor Spacers (Legs)

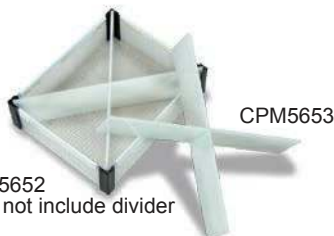
#CPM5664

Required when stacking Vertical Incubators

Isolation baskets

White #CPM5652

- Kit consists of 4 baskets
- 4 baskets fit in one tray
- Capacity: 3,000 eggs per basket
- Constructed of fish-safe materials
- Ideal for incubating endangered species
- Mesh opening: .156"(3.9mm) x .125" (3.2mm)



CPM5653

CPM5652 does not include divider

Use only with large egg species
3.5mm or larger

Isolation Divider Kit (not included with CPM5652)

White #CPM5653

- Kit consists of 1 pair of dividers (shown in photo)

Tray Segregator

Black #CPM5651

- Segregate eggs within a single tray
- Plastic dividers attach easily with a glue bead to tray base
- Fits all MariSource and FAL/Heath Tray equipment
- Multiple dividers may be used within a single tray



(shown installed in egg tray)

Segregators sold individually. See "Replacement Parts & Tools" for glue and glue gun.

VERTICAL INCUBATION TRAYS & COMPONENTS



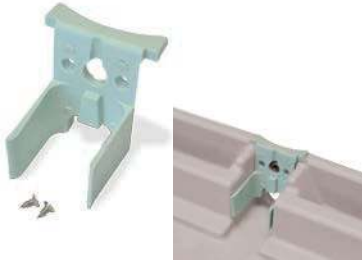
Water tray kit - complete

Part # CPM5602 (typically for salmon)

Part # CPM5603 (typically for trout)

- Lid is removable without disturbing the eggs
- Seal will not let fry escape
- Lid and tray screened for salmon or trout

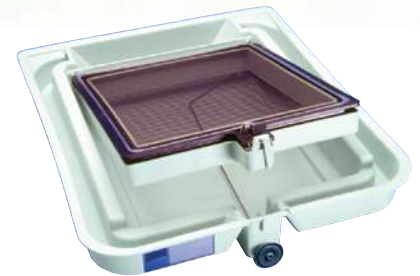
Note: see Screen Mesh sizes below



Water tray insert

Part #CPM5667

Dams the front of the incubation tray, increasing the water flow through the eggs by 10%. Strongly recommended for hatcheries using a low flow water source or for incubators maximizing the number of eggs per tray.



Water tray fully assembled showing egg tray removal



Egg tray lid (with screen)

Part # CPM5622 (12x12 typically for salmon)

Part # CPM5623 (14x18 typically for trout)

Part # CPM56220 (20x20 other species)

Note: see Screen Mesh sizes



Egg tray

Part # CPM5621 (12x12 typically for salmon)

Part # CPM5624 (14x18 typically for trout)

Part # CPM562020 (20x20 other species)

- Flotation chamber
- Screen seat forces water to well up through egg basket

Screen mesh sizes:



Salmon
12x12 *



Trout
14x18 *



Other
20x20 *

PVC coated fiberglass screen is species-specific
Other screen sizes available

Qty depends on Egg size and density

* identifies number of open spaces in a 1" square



Water tray

Part # CPM5620

Clear Water tray

Part # CPM5620CL

- Durable
- Impact resistant material
- Fish-safe material
- Cleans easily



Welded aluminum frame w/guides (side panels)

Part # CPM56027 - 4 Tray

17¹/₄" (43.8cm) x 23³/₄" (60.3cm) x 25" (63.5cm)

Part # CPM5600 - 8 Tray

32¹/₄" (81.9cm) x 23³/₄" (60.3cm) x 25" (63.5cm)

- Molded-in tray guides are corrosion free
- Available in 4-tray, 8-tray and 16-tray configurations

Welded aluminum frame w/CLEAR guides (side panels)

Part # CPM56027CL - 4 Tray

17¹/₄" (43.8cm) x 23³/₄" (60.3cm) x 25" (63.5cm)

- Molded-in tray guides are corrosion free
- Available in 4-tray configuration

HATCHERY SUPPLIES



Water tray spillway dam

Part# CPM5618

- Reduces bubbles and turbulence by forcing water to cascade over



Measuring board - 100cm

Part# CPM5641

- Tapered to hold fish securely
- Durable and easy to clean
- Smooth nonporous surface is made of lightweight plastic
- Header panel holds a clipboard

Dims:

3½"(8.9cm) H

11½"(28.9cm) W

50"(127cm) L



Substrate

Part# CPM5632

- 2 Layer (contains 4 per box)
- More cost effective than other substrates.
- Supports fry during early development for heavier and better quality fry and helps to minimize egg crushing.



Spawning knife

Part# CPM5638

- Designed for extracting eggs
- Cryogenically hardened blade lasts 4X longer!
- Replaceable blade (CPM5668)
- Minimum 24 per order



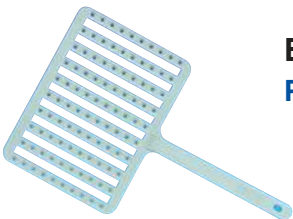
Smolt

Measuring board - 30cm

Part# CPM5640

Same as above, except only measures up to 30 cm.

- Compact design for field studies



Egg counter

Part# CPM5650

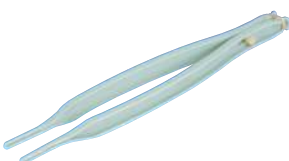
- Specially designed indents hold 100 eggs in even rows
- Made of nontoxic, impervious and buoyant material



Front discharge kit

Part# CPM5625

- Specially molded plastic dams are installed at the outflow channels of the bottom-most tray
- Discharge pipes connect to plastic tubing for a leak free outlet
- Waste water can be discharged at a safe distance



Egg picker

Part# CPM5665

- Lightweight plastic impervious to chemicals and solvents
- Opening size is adjustable
- Adjust tension by adding rubber bands to the end



Rear discharge kit

Part# CPM5628

- Discharge hoses connect to plastic fittings for a leak free outlet
- Waste water can be discharged at a safe distance
- Hose not included with kit

REPLACEMENT PARTS & TOOLS



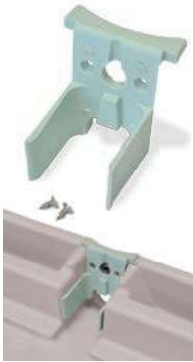
Clean out rod with stopper Part #CPM5648

The clean out rod with stopper allows sediment to be removed from the tray without disturbing live eggs. The stopper at the end prevents any leakage from the tray.



Replacement stopper Part #CPM5669 - 8 ea Part #CPM5670 - 40 ea

The redesigned stopper provides a reliable leak-proof seal at the drain.



Water tray insert Part #CPM5667

Dams the front of the incubation tray, increasing the water flow through the eggs by 10%. Strongly recommended for hatcheries using a low flow water source or for incubators maximizing the number of eggs per tray.



Spline Part #CPM5686—2,800 foot spool Part #CPM5692—1,000 foot roll Part #CPM5689—100 foot roll

The spline locks the screen into the groove of the tray. It is used when re-screening MariSource trays and lids.



Locking pin Part #CPM56006

Prevents tray lid from becoming accidentally dislodged. Sold individually.



Spline tool Part #CPM56013

The spline tool speeds and simplifies the process of rescreening MariSource trays and lids. Sold individually.



Industrial grade glue gun Part #CPM5680

The perfect tool to install tray segregators or rescreen existing trays. Commercial grade.



Glue sticks Part #CPM5681

These 3M glue sticks are formulated to withstand constant immersion without deterioration or loss of adhesion. Kit of 24 glue sticks.



Bulk screen - 18" x 100ft Part #CPM5687

Trout 14x18 *
Part #CPM5685
Salmon 12x12 *
Part #CPM5687-1
Other 20x20 *

PVC-coated fiberglass material to rescreen egg trays and lids.

* identifies number of open spaces in a 1" square



Water tray stickers Part #CPM56085

Foil backed sticker adheres permanently to water trays. Provides rewritable surface for identifying and distinguishing subgroups. Sold individually.



Spacer Kit for 12 or 16 tray installation Part #CPM5601

Used to combine two stacks into a single stack of 12 or 16 trays



Flip Lock stopper Part #CPM5647

To replace our cleanout rod assembly for a more permanent seal.

PART NUMBERS & INDEX

Description	UOM	Part #	Metric	Weight	Dimensions
VERTICAL INCUBATORS					
4 tray vertical incubator - 12x12 screen - typically Salmon	ea	CPM5604	27.3 kg	60 lbs	17 1/4"H x 23 3/4"W x 25"D
4 tray vertical incubator - 14x18 screen - typically Trout	ea	CPM5605	27.3 kg	60 lbs	17 1/4"H x 23 3/4"W x 25"D
4 tray vertical incubator - 20x20 screen - other species	ea	CPM560420	27.3 kg	60 lbs	17 1/4"H x 23 3/4"W x 25"D
Clear 4 tray vertical incubator - 12x12 screen - typically Salmon	ea	CPM5604CL	36.3 kg	80 lbs	17 1/4"H x 23 3/4"W x 25"D
Clear 4 tray vertical incubator - 14x18 screen - typically Trout	ea	CPM5605CL	36.3 kg	80 lbs	17 1/4"H x 23 3/4"W x 25"D
Clear 4 tray vertical incubator - 20x20 screen - other species	ea	CPM560420CL	36.3 kg	80 lbs	17 1/4"H x 23 3/4"W x 25"D
8 tray vertical incubator - 12x12 screen - typically Salmon	ea	CPM5608	50 kg	110 lbs	32 1/2"H x 23 3/4"W x 25"D
8 tray vertical incubator - 14x18 screen - typically Trout	ea	CPM5609	50 kg	110 lbs	32 1/2"H x 23 3/4"W x 25"D
8 tray vertical incubator - 20x20 screen - other species	ea	CPM560820	50 kg	110 lbs	32 1/2"H x 23 3/4"W x 25"D
12 tray vertical incubator - 12x12 screen - typically Salmon	ea	CPM5612	77.3 kg	170 lbs	one box 8-tray & one box 4-tray
12 tray vertical incubator - 14x18 screen - typically Trout	ea	CPM5613	77.3 kg	170 lbs	one box 8-tray & one box 4-tray
12 tray vertical incubator - 20x20 screen - other species	ea	CPM561220	77.3 kg	170 lbs	one box 8-tray & one box 4-tray
16 tray vertical incubator - 12x12 screen - typically Salmon	ea	CPM5616	95.5 kg	210 lbs	69"H x 23 3/4"W x 25"D
16 tray vertical incubator - 14x18 screen - typically Trout	ea	CPM5617	95.5 kg	210 lbs	69"H x 23 3/4"W x 25"D
16 tray vertical incubator - 20x20 screen - other species	ea	CPM561620	95.5 kg	210 lbs	69"H x 23 3/4"W x 25"D
INCUBATOR COMPONENTS					
4 tray incubator frame w/CLEAR side panels	ea	CPM56027CL	14 kg	31 lbs	17 1/4"H x 23 3/4"W x 25"D
4 tray incubator frame w/BLACK side panels	ea	CPM56027	5 kg	11 lbs	17 1/4"H x 23 3/4"W x 25"D
8 tray incubator frame w/BLACK side panels	ea	CPM5600	10 kg	22 lbs	32 1/2"H x 23 3/4"W x 25"D
Water tray complete kit - typically Salmon	ea	CPM5602	4.5 kg	10 lbs	3 3/4"H x 21"W x 24 3/4"D
Water tray complete kit - typically Trout	ea	CPM5603	4.5 kg	10 lbs	3 3/4"H x 21"W x 24 3/4"D
Water tray green	ea	CPM5620	2.7 kg	6 lbs	3 3/4"H x 21"W x 24 3/4"D
Water tray clear	ea	CPM5620CL	4.08 kg	9 lbs	3 3/4"H x 21"W x 24 3/4"D
Egg tray 12x12 screen - typically Salmon	ea	CPM5621	1.4 kg	3 lbs	2 7/8"H x 14 3/4"W x 20"D
Egg tray 14x18 screen - typically Trout	ea	CPM5624	1.4 kg	3 lbs	2 7/8"H x 14 3/4"W x 20"D
Egg tray 20x20 screen - other species	ea	CPM5624	1.4 kg	3 lbs	2 7/8"H x 14 3/4"W x 20"D
Egg tray lid 12x12 screen - typically Salmon	ea	CPM5622	.5 kg	1 lbs	1 1/4"H x 15"W x 19 3/4"D
Egg tray lid 14x18 screen - typically Trout	ea	CPM5623	.5 kg	1 lbs	1 1/4"H x 15"W x 19 3/4"D
Egg tray lid 20x20 screen - other species	ea	CPM5623	.5 kg	1 lbs	1 1/4"H x 15"W x 19 3/4"D
Substrate 2-Layer (contains 4)	ea	CPM5632	.5 kg	2 lbs	
INCUBATOR ISOLATION COMPONENTS					
Isolation panel - clear 8 tray (front or rear)	ea	CPM5626	2.3 kg	5 lbs	
Isolation panel - black 8 tray (front or rear)	ea	CPM5627	2.3 kg	5 lbs	
Isolation panel - black 4 tray (front or rear)	ea	CPM5634	1.4 kg	3 lbs	
Isolation top panel - black	ea	CPM5635	1.4 kg	3 lbs	
Drip pan - black (4 or 8 tray)	ea	CPM5630	2.3 kg	5 lbs	
Tray segregator	ea	CPM5651	.5 kg	1 lbs	
Isolation basket kits - (kit contains 4 baskets)	ea	CPM5652	1.4 kg	3 lbs	
Isolation basket dividers - (kit to divide one basket)	ea	CPM5653	85 g	3 oz	
HATCHERY SUPPLIES					
Water tray dam "Spillway dam"	ea	CPM5618	227 g	8 oz	
Discharge control kit - front	ea	CPM5625	.5 kg	1 lbs	
Discharge control kit - rear	pr	CPM5628	.5 kg	1 lbs	
Spawning knife - (min. 24 per order)	ea	CPM5638	227 g	8 oz	
Measuring board - 30 cm	ea	CPM5640	170 g	3 lbs	
Measuring board - 100 cm	ea	CPM5641	3.2 kg	7 lbs	
Egg counter - 100 eggs	ea	CPM5650	227 g	8 oz	
Egg picker	ea	CPM5665	227 g	8 oz	
COMPONENT PARTS					
Replacement stoppers - kit of 8 (new style)	ea	CPM5669	.5 kg	1 lbs	
Replacement stoppers - kit of 40 (new style)	ea	CPM5670	1.4 kg	3 lbs	
Spacer kit for 16 tray installation	ea	CPM5601	.9 kg	2 lbs	
Locking pin for lid	ea	CPM56006	227 g	8 oz	
Cleanout rod with stopper (new style)	ea	CPM5648	227 g	8 oz	
Flip lock stopper	ea	CPM5647	227 g	8 oz	
Electric glue gun	ea	CPM5680	.9 kg	2 lbs	
Bostik glue - kit of 24 sticks	ea	CPM5681	.9 kg	2 lbs	
Screen 12x12 - 18"x100' per roll - Salmon	rl	CPM5685	2.3 kg	5 lbs	
Screen 14x18 - 18"x100' per roll - Trout	rl	CPM5687	2.3 kg	5 lbs	
Screen 20x20 - 18"x100' per roll - Pike	rl	CPM5687	2.3 kg	5 lbs	
Spline 100' - black	rl	CPM5689	.5 kg	1 lbs	
Spline 1000' - black	rl	CPM5692	4.5 kg	10 lbs	
Spline 2800' - black	rl	CPM5686	12.7 kg	28 lbs	
Splining Tool	ea	CPM56013	227 g	8 oz	
Conversion kit (Heath - MariSource)	ea	CPM5690	227 g	8 oz	
Isolation floor spacer kit - legs	ea	CPM5664	.5 kg	1 lbs	
Water tray insert	ea	CPM5667	227 g	8 oz	
Water tray stickers	ea	CPM56085	14 g	1 lbz	



Pure Aquatics

www.pureaquatics.com.au